

SUSE Linux Enterprise Desktop 10

GNOME Quick Start

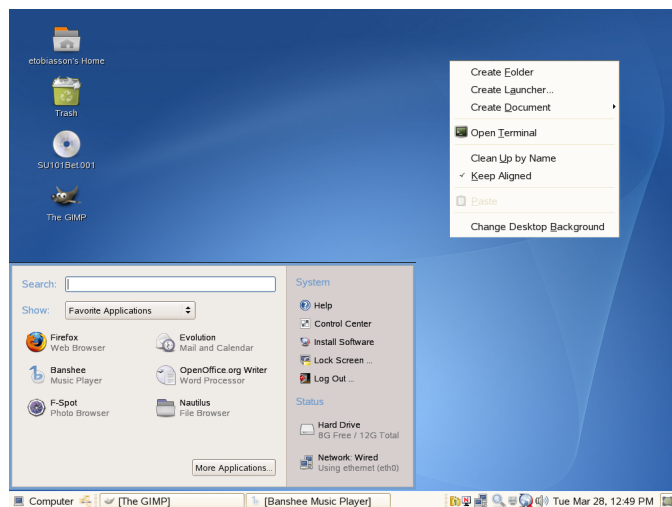
NOVELL® QUICK START CARD

SUSE® Linux Enterprise Desktop provides the tools that Linux* users require in their daily activities. It comes with an easy-to-use graphical user interface (GNOME desktop) which communicates with the underlying Linux system to access and manage files, folders, and programs. SUSE Linux Enterprise Desktop provides an integrated suite of applications which meet all professional requirements to perform tasks in a business environment such as e-mailing and calendaring, managing and exchanging data, using the Internet, and multimedia applications. The OpenOffice.org suite is also included, which allows you to edit and save files in a number of formats. As OpenOffice.org is available for several operating systems, you can use the same data across different computing platforms.

Getting Started

When you start your system, you are usually prompted to enter your username and password. If you did not install your system, check with your system administrator for your username and password.

After having logged into GNOME for the first time, you will see the GNOME desktop which offers the following basic elements:





Desktop Icons: Access programs and features on your system by double-clicking an icon. Right-click an icon to access additional menus and options. You can add as many icons to your desktop as you want. By default, the desktop features two key icons: your personal Home folder, and a trash can for deleted items. Other icons representing devices on your computer, such as CD drives, might also be present on the desktop. If you double-click your Home folder, the Nautilus file manager starts and displays the contents of your home directory.

Bottom Panel: The desktop includes a panel across the bottom of the screen. The bottom panel contains the Computer menu (similar to the Start menu in Windows™) and the icons of all applications currently running. You can also add applications and applets to the panel for easy access.

Main Menu: Open the main menu by clicking *Computer* on the far left of the bottom panel. Commonly used applications appear in the main menu. A search field lets you quickly search for applications and files. Access additional applications, listed in categories, by clicking *More Applications*.

System Tray: The right side of the bottom panel holds some smaller icons, including the system clock which dis-

plays the date and time, the volume control, and icons for several other helper applications. Click  to change your screen resolution and  to display your network connections and options for disconnecting or changing network configurations. This icon changes depending on the type of network connection you have.

Taskbar: By default, all started applications are displayed in the taskbar (the area in the middle of the panel between the Computer button and the system tray). You can access any started application regardless of the currently active desktop. Click an application name to open it. Right-click an application name to see options for moving, restoring, or minimizing the window.

Desktop Menu: Right-clicking an empty spot on the desktop displays a menu with various options. Click *Create Folder* to create a new folder. Create a launcher icon for an application with *Create Launcher*. Provide the name of the application and the command for starting it, then select an icon to represent it. You can also change the desktop background and align desktop icons.

Desktop Panels

The bottom panel can be customized to meet your individual needs, and additional panels can be configured to further personalize your desktop.

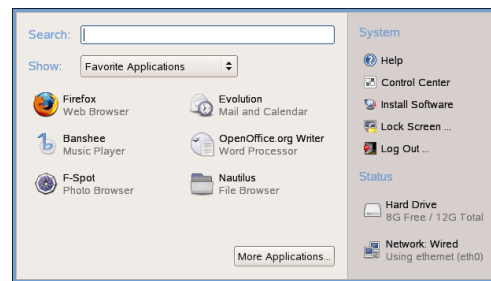
To add a new panel, right-click the bottom panel and select *New Panel*. To delete a panel, right-click the panel and select *Delete This Panel*. SLED requires that at least one panel be left on the desktop.

Adding and Removing Panel Icons

1. Right-click a blank space on the panel and select *Add to Panel*.
2. Browse to the desired program and double-click it to add it to the panel.
3. Customize the program icon as desired by right-clicking the icon and selecting *Preferences*.
4. To remove a program icon from a panel, right-click the icon and select *Remove From Panel*.

Starting Programs

To run a program in SUSE Linux Enterprise Desktop, click *Computer* on the panel to open the main menu screen. If the program you want is not in the main menu screen, click *More Applications* to view a list of all available applications. You can also press **Alt + F1** to open a more traditional version of the main menu. Navigate the submenus and click an entry to start the corresponding program.



If you already know the name of an application but are not sure how to start it from the main menu, use the *Search* field in the main menu. Click *Computer*, type a part of the application name in the *Search* field, then press **Enter**. If the application is installed on your system, the name of the application will appear in the Desktop Search dialog box. Click the name to start the program.

Customizing Your Desktop


You can easily add, delete, and create shortcut icons on your desktop. You can also change icon properties and the desktop background to suit your needs.

Adding Program Icons to Your Desktop

1. Click *Computer*.
2. Browse to the desired program.
3. Click and drag the icon to the desktop and position it as desired.

To delete an icon from your desktop, simply click the program icon and press the **Delete** key on your keyboard.

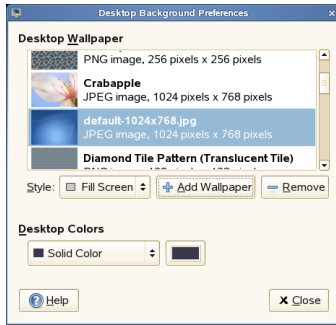
Changing Icon Properties

After a shortcut icon is on the desktop, you can change the icon, add an emblem  (a graphic image placed on the corner of the icon), configure permissions, or add a note regarding the program. This is done through the Properties dialog box. To access Properties:

1. Right-click the icon and select *Properties*.
2. From the tabs at the top of the dialog box, customize the icon as needed. Some options include:
 - **Basic:** Choose the Select Custom Icon option to customize the look of the icon.
 - **Emblems:** Choose a graphic image you want associated with the icon.
 - **Permissions:** Assign permissions for the owner, a group, or others who might be sharing this machine.
 - **Notes:** Add notes regarding the program or its use to the icon.
3. Click *Close* when you have completed your changes.

Changing the Desktop Background

1. Right-click the background.
2. Select *Change Desktop Background*.

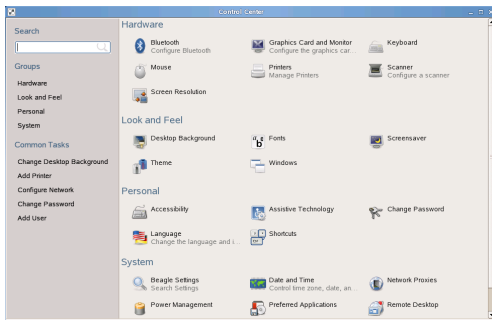


3. To select wallpaper from the preprogrammed images, browse to the desired image. After you select it, the background changes automatically.
4. To add an image, select *Add Wallpaper*, browse to the desired image, then click *Open*.
5. To display a colored background, select *No Wallpaper* from the top of the list; then, from *Desktop Colors*, select the fill pattern and the desired colors.
6. Click *Close*.

Using the GNOME Control Center

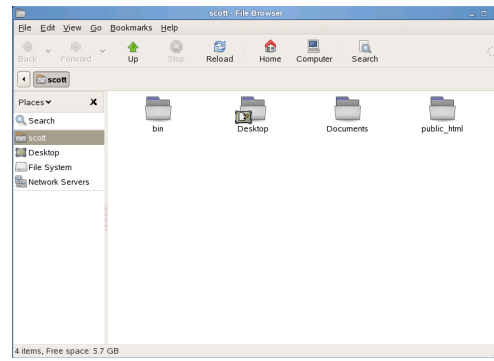
Apart from changing individual desktop elements, GNOME lets you personalize your desktop to a very high degree. Find more settings to adjust the overall appearance and behavior of your desktop in the GNOME Control Center. There, you can also change fonts, keyboard and mouse configurations, regional and language settings, parameters for your Internet and network usage, and more.

Start the Control Center by clicking *Computer* → *Control Center*.



Managing Files and Folders

Use the Nautilus File Manager to create and view folders and documents, run scripts, and create CDs of your data. Open Nautilus by clicking *Computer* → *Nautilus*, or by clicking your Home directory icon on the desktop. The contents of your home directory are displayed.



The elements of the Nautilus window include the following:

Menu: Use to perform most tasks.

Toolbar: Use to quickly navigate between files and folders, and to access files and folders.

Location Bar: Use to locate files, folders, and URI sites.

Side Pane: Use to navigate or display information about the selected file or folder. You can customize what is shown in the pane through the drop-down list. The list includes ways to view information about files, perform actions on file, add emblems to files, view a history of recently visited sites, and display your files in the Tree system.

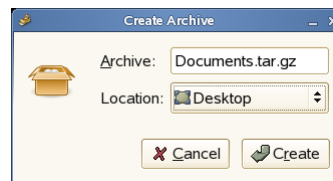
View Pane: Displays folders and files. Use the options on the *View* menu to increase or decrease the size of content in the view pane and to display items as a list or as icons.

Status Bar: Displays the number of items in a folder and the available free space. When a file is selected, it displays the filename and size.

Archiving Folders

If you have files you have not used in a while but want to keep on your computer, you can compress the files into a tape archive (TAR) format.

1. In the Nautilus view pane, right-click the folder you want to archive, then click *Create Archive*.



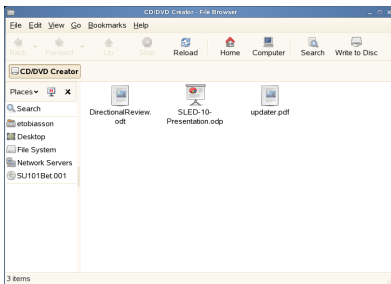
2. Accept the default archive file name or enter a new name. Use the `.tar.gz` file extension for the most common form.
3. Specify a location for the archive file, then click *Create*.

To extract an archived file, right-click the file and choose *Extract Here*.

Creating a CD/DVD

If your system has a CD or DVD read/writer drive, you can use the Nautilus file manager to burn CDs and DVDs.

1. Click *Computer More Applications Audio & Video GNOME CD/DVD Creator* or insert a blank disc and click *Create Data CD*.
2. Copy the files you want to put on the CD or DVD into the Nautilus *CD/DVD Creator* window.



3. Click *Write to Disc*.
4. Modify information in the Write to Disc dialog or accept the defaults, then click *Write*.

The files are burned on the disc. This could take a few minutes, depending on the amount of data being burned and the speed of your burner.

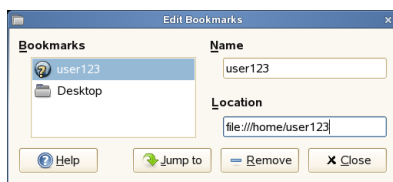
You can also use the Helix Banshee music player to burn audio and MP3 CDs.

Using Bookmarks

Use the Nautilus Bookmarks feature to mark your favorite folders.

1. Select the folder or item you want to create a bookmark for.
2. Click *Bookmarks → Add Bookmark*. The bookmark is added to the list, with the folder name as the bookmark name. When you bookmark a file, it is the folder that is actually bookmarked.
3. To select an item from your Bookmarks list, click *Bookmarks*, then click the desired bookmark in the list.

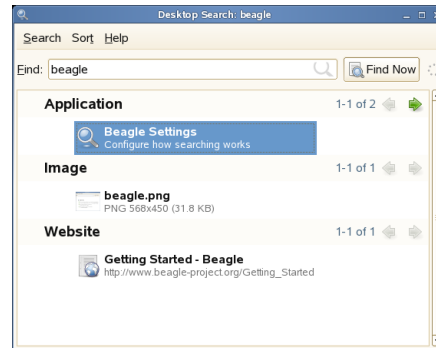
You can also organize your Bookmarks list by clicking *Bookmarks → Edit Bookmarks* and making your selections in the dialog box.



To change the order of your bookmarks, click a bookmark and drag it to the desired location.

Finding Files on Your Computer

To locate files on your computer, click *Computer*, enter your search terms in the *Search* field, then press Enter. The results are displayed in the Desktop Search dialog box.



You can use the results lists to open a file, forward it via e-mail, or display it in the file manager. Simply right-click an item in the results list and select the option you want. The options available for an item in the results list depend on the type of file it is. Clicking a file in the list displays a preview of the file and information such as the title, path, and when the file was last modified or accessed.

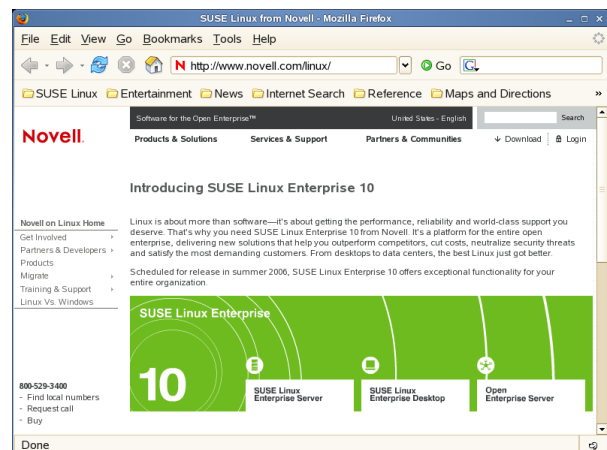
Use the *Search* menu to limit your search to files in a specific location, such as your address book or Web pages, or to display only a specific type of file in your results list. The *Sort* menu lets you sort the items in your results list according to name, relevance, or the date the file was last modified.

You can also access Desktop Search by clicking *Computer → More Applications → System → Beagle Search Tool*

pressing *F12*, or clicking  on the bottom panel.


Browsing the Internet with Firefox

Firefox is fast becoming the Web browser of choice for many. It has all the familiarity of other browsers, plus added features such as security and privacy tools. To start Firefox, click *Computer → Firefox Web Browser*.



With features like tabbed browsing, pop-up window blocking, and download and image management, Firefox combines the latest Web technologies. Its easy access to different search engines helps you find the information you need. Enter an URL in the location bar to start browsing. To open an empty tab in Firefox, press **Ctrl + T** and type in a new URL. To open a link in a new tab, click the link with your middle mouse button. Right-click a tab to access more tab options. You can create a new tab, reload one or all existing tabs, or close a single tab or all tabs. You can also change the sequence of the tabs by dragging and dropping them to a new position.

Finding Information on the Web

1. To start a search on the Web with the Google engine, type your search keywords in the integrated search box  on the right of the location bar and press **Enter**. The results display in the window.
2. To use a different search engine, click the **G** icon in the search box to open a list of other search engines.
3. Click the desired engine and press **Enter** to start the search.

You can also search the current Web page for keywords. To do so, press **Ctrl F** to open a Find bar at the bottom of the window. Enter your search keyword there and use the buttons to the right of the box to search in different directions or to highlight all hits in the text.

Downloading with Firefox

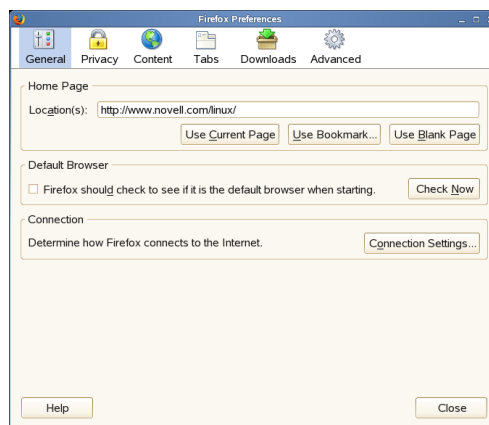
If you download a file with Firefox, the Firefox Download Manager starts and saves this file to the folder configured in Firefox Preferences. By default, your desktop is the destination folder for downloaded files. Firefox shows your finished downloads in the *Downloads* window.



You can open the downloaded files from there directly. To clean up the history of downloaded files, click *Clean Up*.

Configuring Firefox Preferences

To adjust the default download folder or to activate or modify the pop-up blocking feature, click *Edit* → *Preferences*.



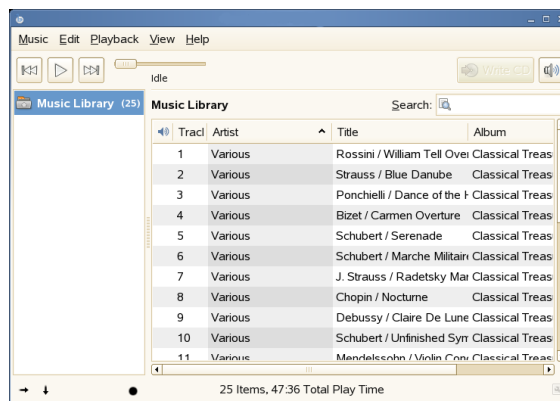
From here you can also configure numerous other settings such as appearance, language, privacy, and tab options. Click the icons and set the options on each page according to your wishes. Click *Close* to apply the changes.

Managing Your Music


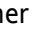

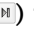

Use Helix Banshee to import CDs, sync your music collection to an iPod, play music directly from an iPod, create playlists with songs from your library, and create audio and MP3 CDs from subsets of your library.

To open Helix Banshee, click *Computer* → *Helix Banshee Music Player*.

The first time you open Helix Banshee, you are prompted to import music. Click *Automatic Import* to search for music in your home directory and add it to the library. Click *Import Folder* to tell Helix Banshee where to look for music. After successfully importing your music, your library is displayed.



Playing Your Music

To play a song, simply select the song in the library and click the Play button (). You can also use the buttons on the upper left corner (  ) to pause a song or play the next or previous song. Use  to adjust the volume.

Helix Banshee also has an integrated CD player. When you insert a music CD, your CD title appears in the left panel. Select the title and click the Play button to play your full CD.

Organizing Your Music

To create a new playlist, click *Music* → *New Playlist* (or press Ctrl + N). A new playlist is displayed in the left panel. Double-click *New Playlist* and enter the name you want. You can drag and drop songs from one playlist to another, or use the options on the *Edit* menu to remove or delete songs and rename or delete playlist.

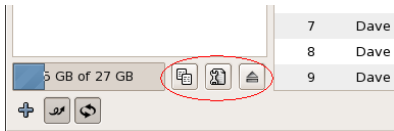
To view the properties of a song, select a song in the library and click *Edit* → *Properties*. You can view the duration of a song, the number of times it has been played, when it was last played, and when it was imported.

You can edit the name of the artist, album, and title, as well as the track number and track count. If you want to set all fields in a set to the same value, select multiple songs in a playlist, then click *Edit* → *Properties*.

Using Helix Banshee with Your iPod

To play music from your iPod, simply plug your iPod into your system. Your iPod appears in the left panel. Select the song you want to hear, then click the Play button.

When the iPod is selected in the left panel, information about your iPod is displayed at the bottom left, including disk usage and *Sync*, *Properties*, and *Eject* buttons.



There are three ways to manage the music on your iPod:

- **Manually:** Browse your iPod and drag music between your library and the iPod.
- **Automatically sync:** Automatically copies everything in your library to the iPod.
- **Automatic merge:** All the music on your iPod that is not in your library is downloaded to your library, and all the music that is in your library and not in your iPod is uploaded to your iPod.

Creating Audio and MP3 CDs

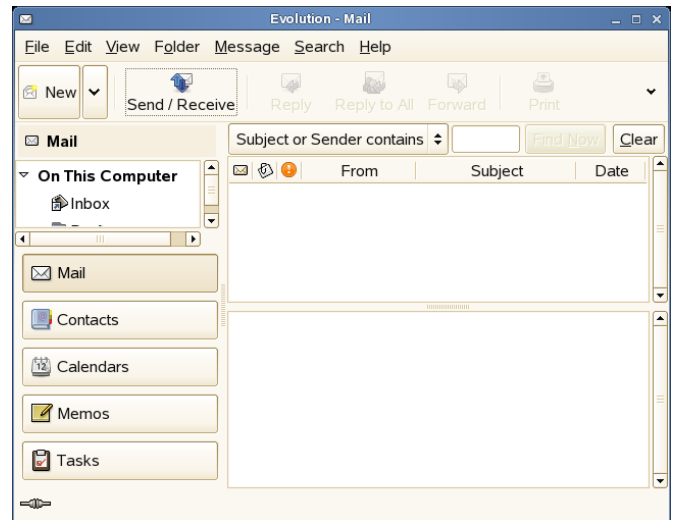
To create audio and MP3 CDs, select the songs you want, then click the *Write CD* button in the upper right side of Helix Banshee.

E-Mailing and Calendaring

For reading and managing your mails and events, SUSE Linux Enterprise Desktop offers you Evolution™, a highly evolved groupware program, and the GroupWise® Client, a cross-platform, corporate e-mail system that provides secure messaging, calendaring, scheduling, and instant messaging.

Starting Evolution for the First Time

Novell® Evolution seamlessly combines e-mail, a calendar, an address book, and a task list in one easy-to-use application. With its extensive support for communications and data interchange standards, Evolution can work with existing corporate networks and applications, including Microsoft™ Exchange.

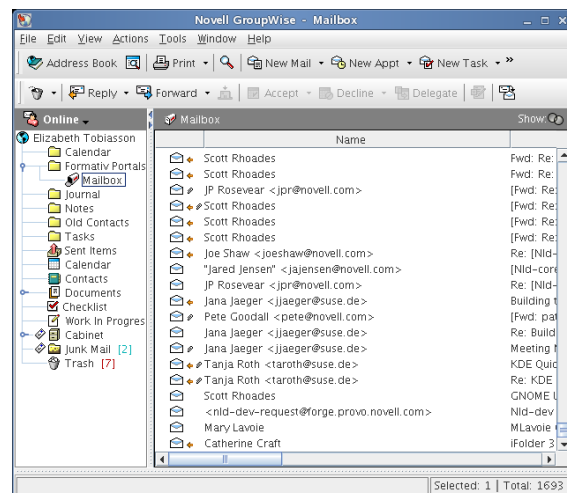


To start Evolution, click *Computer* → *Evolution Mail and Calendar*.

The first time you start it, Evolution prompts you with a few questions as it sets up a mail account and helps you import mail from your old mail client. Then it shows you how many new messages you have and lists upcoming appointments and tasks, as well as the current weather and news from news feeds. The calendar, address book, and mail tools are available in the shortcut bar on the left.

Using the GroupWise Client

GroupWise is a robust, dependable messaging and collaboration system that connects you to your universal mailbox anytime and anywhere. SLED 10 includes the GroupWise 7 Cross-Platform Client for Linux.



To open the GroupWise Client, click *Computer* → *More Applications* → *Communicate* → *GroupWise*.

Your main work area in GroupWise is called the Main Window. From the Main Window of GroupWise, you can read your messages, schedule appointments, view your Calendar, manage contacts, change the mode of GroupWise you are running in, open folders, open documents, and much more.

For more information on using GroupWise, click *Help* → *User Guide* in the GroupWise Client.

Instant Messaging with Gaim

Gaim is a multiprotocol instant messaging (IM) client for Linux, BSD, Mac* OS X, and Windows. It is compatible with GroupWise Messenger, AOL* Instant Messenger (AIM), ICQ, Yahoo!*, IRC, Jabber, Gadu-Gadu, and Zephyr* networks.

To configure Gaim:

1. Click *Computer* → *More Applications* → *Communicate* → *Gaim Instant Messenger*.



2. Click *Accounts* → *Add*.
3. Select the protocol you want, then type your screen name, password, and alias in the appropriate fields.
4. Select any desired user options, then click *Show More Options*.
5. Type your server address in the *Server Address* field.
6. Type your server port (if different from the default) in the *Server Port* field.
7. Select your proxy type, if needed.
8. Click *Save*, then click *Close* in the *Accounts* window.
9. Select the account you just created in the *Login* window.
10. Type your password in the *Password* field.
11. Click *Sign On*.

Starting OpenOffice.org

The OpenOffice.org office suite offers a complete set of office tools including a word processor, spreadsheet, presentation, vector drawing, and database components. Because OpenOffice.org is available for a number of operating systems, you can use the same data across different computing platforms.

To start OpenOffice.org, press **Alt + F2** and enter `ooo`. To create a new document, click *File* → *New*, then choose the type of document you want to create. To open an existing document, click *Open* then select the file you want from the file system.

Viewing PDF Files


Documents that need to be shared or printed across platforms can be saved as PDF (Portable Document Format) files, for example, in the OpenOffice.org suite. SUSE Linux Enterprise Desktop ships with several PDF viewers such as KPDF and Adobe* Acrobat* Reader.

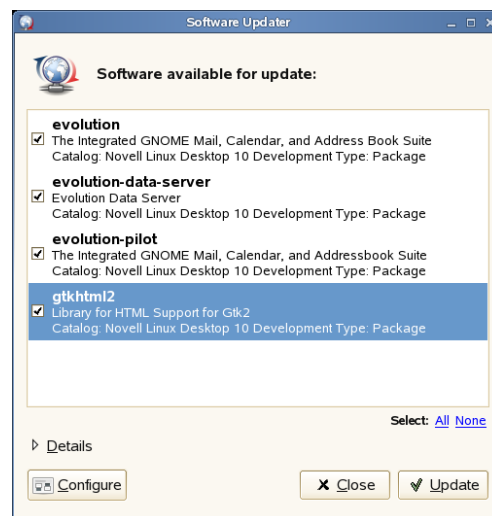
To access KPDF or Adobe Acrobat Reader:

1. Click *Computer* → *More Applications* → *Office*.
2. Click *Acrobat Reader PDF Viewer* or *KPDF PDF Viewer*.
3. To view a PDF file, click *File* → *Open*, locate the desired PDF file, then click *Open*.
4. Navigate through the document using the navigation icons at the top or bottom of the window. If your PDF document provides bookmarks, you can access them in the left panel of the viewer.

Obtaining Software Updates

Novell offers a continuous stream of software security updates for your product. Using the Software Updater applet in your desktop panel, you can easily apply security updates with a few clicks. Whenever you connect to the Internet, Software Updater automatically checks for available updates for your system from the update sources specified in the Software Updater configuration dialog.

Before you can use Software Updater on your system, you must register your product at the Novell update server. To review the available updates, click  on the system tray to open the list.

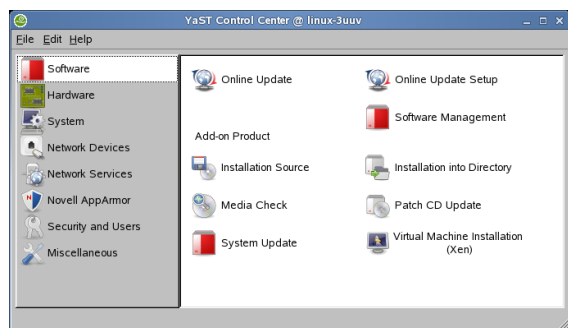


Select or deselect the updates you want to apply, then click *Update*.

Configuring Your System with YaST

Use the YaST Control Center to change the installation and configuration of your whole system. Administrator (or `root`) permission is required to open YaST.

To open YaST, click *Computer* → *More Applications* → *System* → *YaST Control Center*, then enter the `root` password. If you do not know the `root` password, ask your system administrator.



YaST contains various modules you can use to adjust your system settings. These modules are divided into the following categories:

Software: Use the modules of this category to set options for installation and updates and to install or remove software packages.

Hardware: Contains modules for configuring hardware components such as your monitor, keyboard, mouse, printer, and scanner.

System: Use these modules to change system settings such as the date, time, or language and to perform tasks such as backing up or restoring files.

Network Devices: Includes modules for configuring network devices such as network cards, ISDN, DSL, or modem.

Network Services: Contains modules for network services and for configuring clients such as LDAP and NFS.

Novell AppArmor: Use the modules of this category to configure the Novell AppArmor access control system.

Security and Users: Use these modules to configure security aspects such as firewall options, and to create and manage users and groups.

Miscellaneous: The YaST Control Center has several modules that cannot easily be classified into the first six module groups. The modules in this category can be used for things such as viewing log files and installing drivers from a vendor CD.

Printing

iPrint lets mobile employees, business partners, and customers access printers from a variety of remote locations using existing Internet connections. Whether users are working in an office building, telecommuting from home, or attending a sales meeting in another country, iPrint ensures that they can print documents quickly, easily, and reliably. SUSE Linux Enterprise Desktop ships with the iPrint Client for Linux. To install the Client, see *Installing the iPrint Linux Client* [<http://www.novell.com/documentation/sled10/iprint/data/bwajcld.html>] in the *SUSE Linux Enterprise Desktop iPrint Client User Guide*.

To monitor and manage your print jobs, click *Computer* → *Control Center* → *Printers*. Administrator (or `root`) permission is required.

Logging Out

When you are finished using the computer, click *Computer* → *Log Out*. Then select one of the following options:

Log out: Logs you out of the current session and returns you to the Login dialog.

Shut down: Logs you out of the current session, then turns off the computer.

Restart the Computer: Logs you out of the current session, then restarts the computer.

For More Information

This GNOME Quick Start gives you a short introduction to the GNOME desktop and some key applications running on it. For more detailed information on the GNOME desktop and other SUSE Linux Enterprise Desktop applications, see <http://www.novell.com/documentation/sled10>.

Novell.